

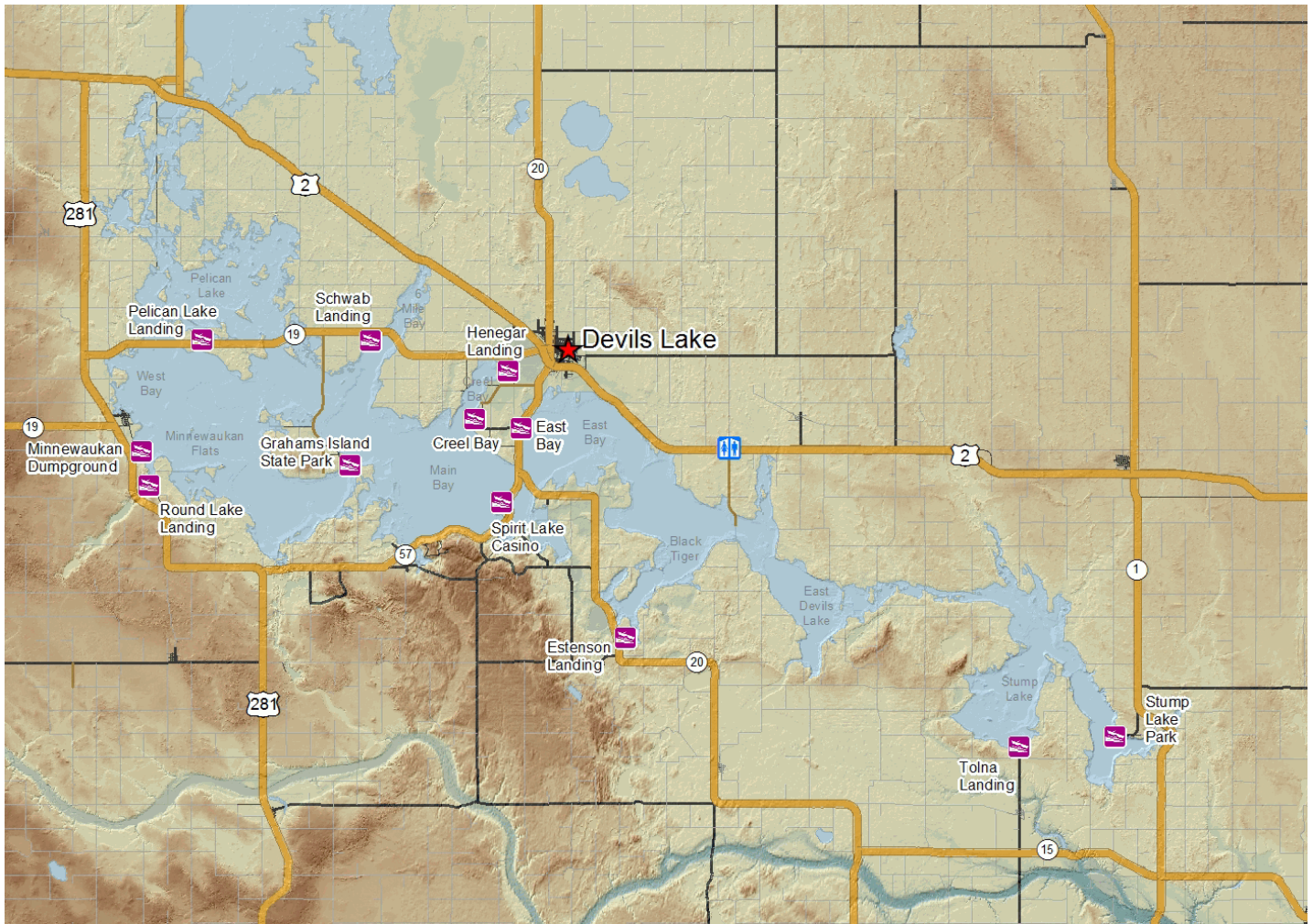


Devils Lake Basin Boating Access Status

Data as of: October 22, 2017

Following is a list of boating access sites in the Devils Lake Basin (Lake Irvine, Devils Lake, and Stump Lake) in North Dakota. All sites have a boat ramp, courtesy dock and restrooms unless otherwise noted. [Hyperlinked Public Waters](#) open a PDF map that includes depth contours on a aerial photo background showing the surrounding area and facilities available. The data contained in this report is updated weekly and contains all changes the Department has been provided. Contact the appropriate managing authority (found in parenthesis at the end of each listing) for for the most up to date status. With winter here, most sites have frozen over and boat ramps will not be usable again until the ice melts next spring.

**** Check current Devils Lake Waters level ****



Devils Lake (Not Specified County): pike, walleye, perch

Pelican Lake Bay -- 15 miles west of Devils Lake on ND Highway 19. (Paved access road, trash receptacles.(ND Game & Fish Dept. - Bob Frohlich: 701-328-6346)

Main Site: Poured Concrete Ramp: **Not Usable** Ramp Elevation (Top - Bottom):1,461.50 - 1,446.50
Channel leading to main lake is extremely shallow

Minnewaukan Dumpground -- 1.5 miles south of Minnewaukan on old U.S. Highway 281. (Gravel access road, no restrooms.(Minnewaukan Community Club - Kathy Nord: 701-351-5394)

DUMPGROUND Site: Poured Concrete Ramp: **Usable** Ramp Elevation (Top - Bottom):1,455.70 - 1,440.80

Round Lake Bay -- 3 miles south of Minnewaukan on U.S. Highway 281. (Paved access road, trash receptacles.(Minnewaukan Community Club - Kathy Nord: 701-351-5394)

Main Site: Poured Concrete Ramp: **Usable** Ramp Elevation (Top - Bottom):1,461.10 - 1,415.20 **Marginal - dredged road cuts to lake are shallow and narrow**

Grahams Island State Park -- 10 miles west of Devils Lake on ND Highway 19, then 6 miles south. (Paved access road, fish cleaning facility, developed and primitive camping, security lights, picnic shelter, trash receptacles, concession, lodging, access fee, RV dump station.(ND Parks & Recreation - Henry Duray: 701-766-4015)

Main Site: Poured Concrete Ramp: **Usable** Ramp Elevation (Top - Bottom):1,460.00 - 1,438.00

Schwab Landing -- 7 miles west of Devils Lake on ND Highway 19. (Paved access road, fish cleaning facility, developed and primitive camping, security lights, picnic shelter, trash receptacles, concession, RV dump station.(ND Game & Fish Dept. - Bob Frohlich: 701-328-6346)

East Ramp Site: Poured Concrete Ramp: **Usable** Ramp Elevation (Top - Bottom):1,458.90 - 1,438.20

West Ramp Site: Poured Concrete Ramp: **Usable** Ramp Elevation (Top - Bottom):1,458.90 - 1,443.90

Creel Bay -- 3 miles south of Devils Lake on ND Highway 20, then 2 miles west and .25 miles north. (Paved access road, fish cleaning facility, developed and primitive camping, security lights, picnic shelter, trash receptacles.(Ramsey County Park Board - Terry Wallace: 701-662-8418)

Main Site: Poured Concrete Ramp: **Usable** Ramp Elevation (Top - Bottom):1,453.80 - 1,420.00

Henegar Landing -- 1 mile west of Devils Lake on ND Highway 19, then .75 miles south. (Paved access road, fish cleaning facility, security lights, trash receptacles.(Ramsey County Park Board - Michael Grafsgaard: 701-662-7600)

Main Site: Poured Concrete Ramp: **Usable** Ramp Elevation (Top - Bottom):1,469.50 - 1,443.70

Spirit Lake Casino -- 6 miles south of Devils Lake on ND Highway 20/57. (Paved access road, fish cleaning facility, developed and primitive camping, security lights, trash receptacles, concession, lodging, boat rental, RV dump station.(Spirit Lake Casino - Spirit Lake Nation F&W Dept.: 701-766-1243)

Main Site: Poured Concrete Ramp: **Usable** Ramp Elevation (Top - Bottom):1,453.30 - Unknown

East Bay -- 3 miles south of Devils Lake on ND Highway 20. (Paved access road, security lights, trash receptacles.(ND Game & Fish Dept. - Bob Frohlich: 701-328-6346)

West Ramp Site: Poured Concrete Ramp: **Usable** Ramp Elevation (Top - Bottom):1,459.00 - 1,442.80

East Ramp Site: Poured Concrete Ramp: **Usable** Ramp Elevation (Top - Bottom):1,460.20 - 1,443.00

Black Tiger Bay -- 7.5 miles east of Devils Lake on U.S. Highway 2, then 6 miles south, 3 miles west. (Gravel access road, no restrooms, no courtesy docks, concession.(ND Parks & Recreation - Henry Duray: 701-766-4015)

East Ramp Site: Poured Concrete Ramp: **Usable** Ramp Elevation (Top - Bottom):1,455.20 - 1,443.10

Estenson Landing -- 15 miles south of Devils Lake on ND Highway 20. (Paved access road, no restrooms, trash receptacles.(ND Game & Fish Dept. - Bob Frohlich: 701-328-6346)

Main Site: Poured Concrete Ramp: **Usable** Ramp Elevation (Top - Bottom):1,461.20 - 1,441.70

Stump Lake (Nelson County): perch, walleye, pike

Tolna Landing (Stump Lake) -- 3 miles north of Tolna. (Gravel access road, fish cleaning facility, security lights, picnic shelter, trash receptacles.(TOLNA COMMUNITY CLUB - :)

Site: Plank Boat Ramp: **Usable**

Site: Boat Ramps, General: **Not Usable**

Stump Lake Park -- 11 miles south, 1 mile west of Lakota. (Paved access road, fish cleaning facility, developed and primitive camping, security lights, picnic shelter, trash receptacles, concession, lodging, RV dump station, , fishing pier.(Nelson County Park Board - Jack Davidson: 701-247-2463)

South Site: Poured Concrete Ramp: **Not Usable**

Main Site: Poured Concrete Ramp: **Usable**